



1 Old Brewery Yard, Newark, NG24 1GF

£650 Per Month





£650 Per Month

1 Old Brewery Yard

Newark, NG24 1GF

- MODERN GROUND FLOOR APARTMENT • LARGE BEDROOM
- SPACIOUS THREE PIECE BATHROOM • PARKING AVAILABLE
- WALKING DISTANCE TO TOWN CENTRE • AVAILABLE FROM MARCH

A MUST VIEW!!

A well presented ground floor apartment is within walking distance to Newark Town centre and Newark Northgate train station. The accommodation comprises an entrance hall, open living kitchen with floor to ceiling windows that offer a light & airy space, spacious bedroom and a bathroom.

Newark is a busy market town situated on the river Trent where the Fosse Way meets the Great North Road. Nottingham, Lincoln, Doncaster and Leicester all lie within commuting distance, whilst the east coast mainline allows London King Cross to be reached within 1 hour and 15 minutes.

Council Tax Band - A
Holding fee- £150
Deposit - £750
EPC - E

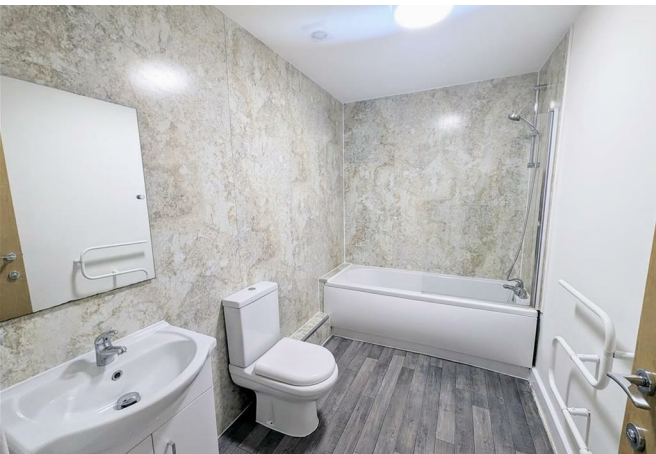


Entrance Hall

Open Plan Living Kitchen 17'5 x 14'4 (5.31m x 4.37m)

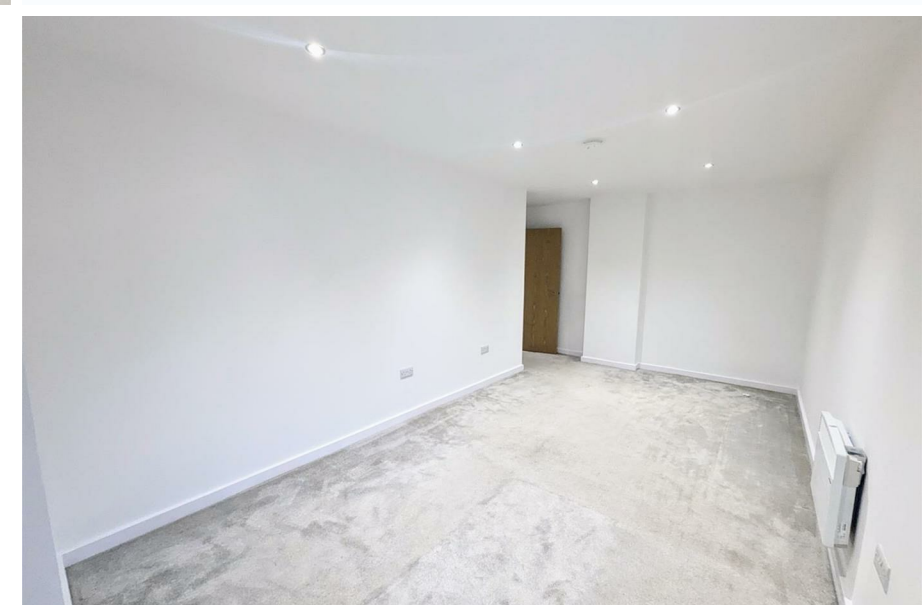
Bathroom 9'2 x 5'4 (2.79m x 1.63m)

Bedroom 18'5 x 9'2 (5.61m x 2.79m)



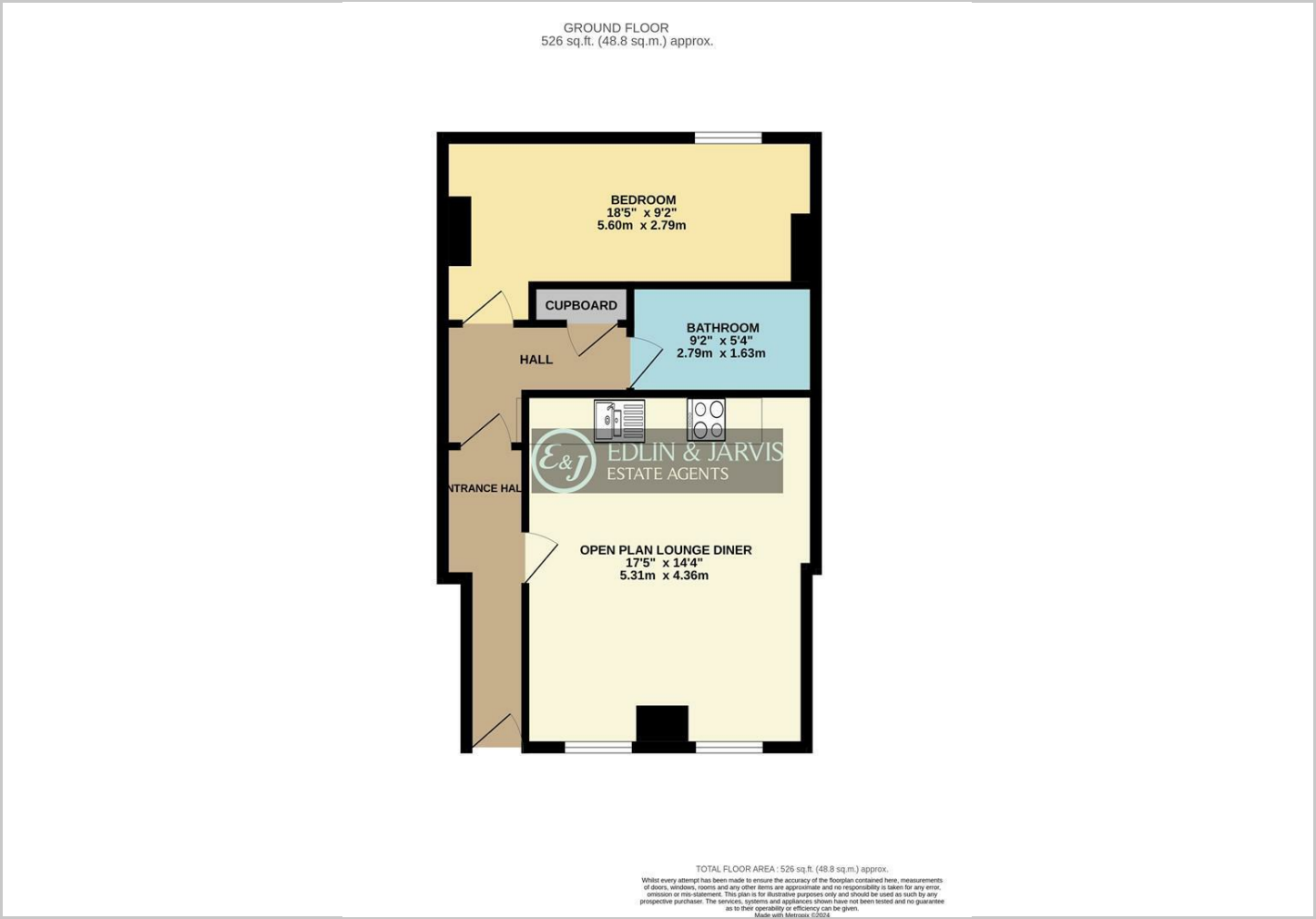


Directions

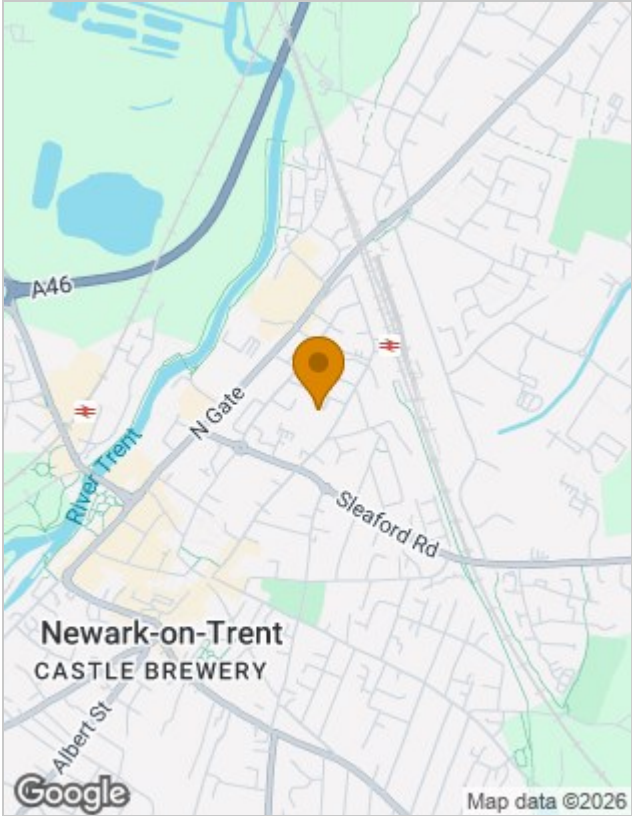




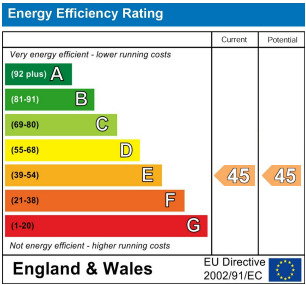
Floor Plans



Location Map



Energy Performance Graph



Viewing

Please contact our Lettings Office on 01636 555043 if you wish to arrange a viewing appointment for this property or require further information.

The particulars are set out as a general outline only for the guidance of intended purchasers or lessees, and do not constitute, any part of a contract. Nothing in these particulars shall be deemed to be a statement that the property is in good structural condition or otherwise nor that any of the services, appliances, equipment or facilities are in good working order. Purchasers should satisfy themselves of this prior to purchasing.